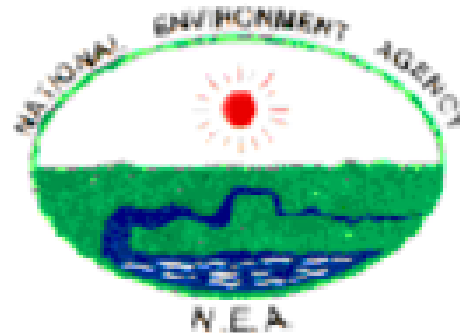


# National Technical Workshop on Environment Statistics in the Gambia

Presenter

**Mr. Lamin Jawneh:**–Assistant Programme Officer

Geographical Information System/  
Environmental Information System  
Unit



## FUNCTION OF GIS /EIS UNIT

- ❖ To review and develop the final version of the state of Environment report.
- ❖ To update current land use /land cover maps.
- ❖ To conduct data inventory of all data centres for harmonization of data.
- ❖ To review and update the GEAP monitoring and assessment indicators.
- ❖ To conduct in-house training for staff on database management and using the techniques of GIS and Remote Sensing.
- ❖ Provide maps for end users.
- ❖ Provide information and maps to students and search fellows and University students etc.

## Land Cover

**Land cover** refers to the vegetation and artificial structures that **cover the land's** surface. **Examples of land cover** include trees, grass, crops, wetlands, water, buildings, **and** pavement etc.

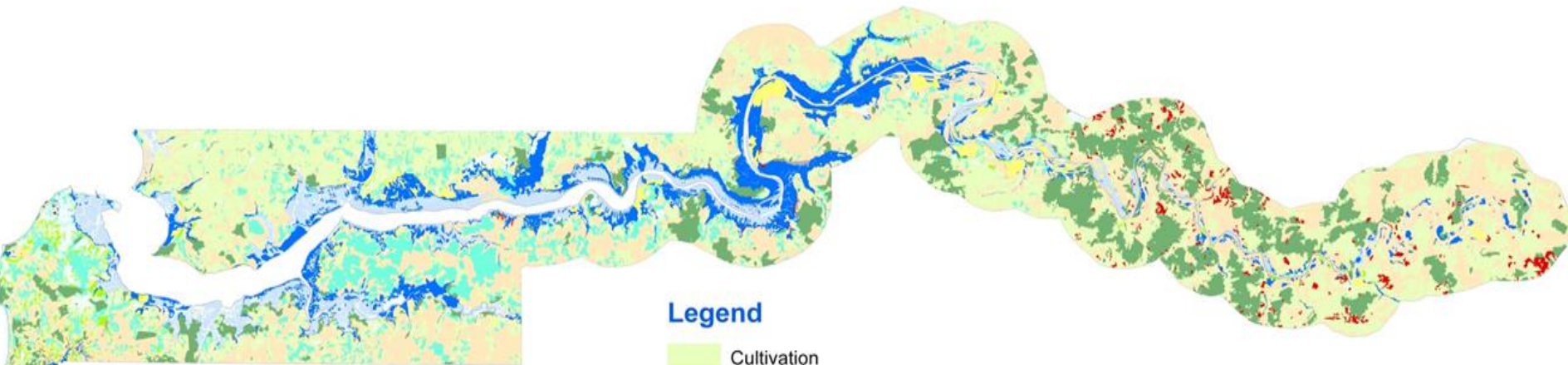
## Land Cover Classes of the Gambia

- Cultivation
- Forest
- Grass land/Low Growth
- Mangrove
- Palms
- Plain Ground
- Plantation
- Rice Field
- Swamp
- Wood

## land cover change in the Gambia

- ▶ The **Gambia's land cover** has changed dramatically. The first **change** is the expansion of agriculture as the savannas are cleared for farming ,Residential, Institutional & Industrials purpose etc.

# Land-Use Land-Cover Map of The Gambia



## Legend

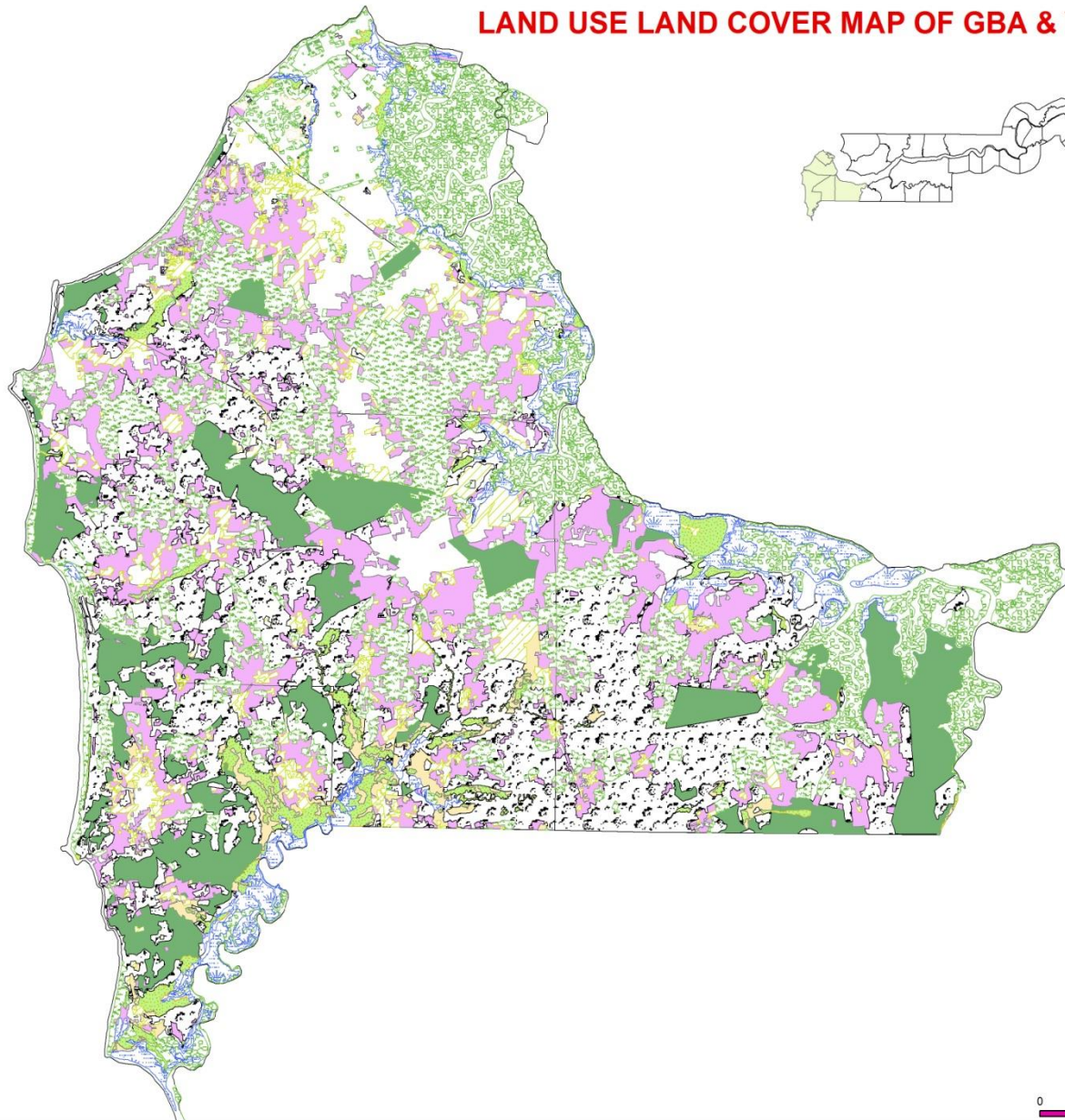
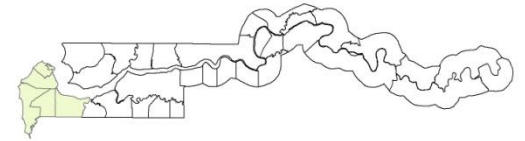
- Cultivation
- Forest
- Grass land / Low Growth
- Mangrove
- Palms
- Plain Ground
- Plantation
- Rice field
- Swamp
- Woods

0 14,000 28,000 56,000 KM  
1:400,000





# LAND USE LAND COVER MAP OF GBA & WCR (2003)



## Legend

- Cultivation
- Forest
- Grass land / Low Growth
- Mangrove
- Palms
- Plain Ground
- Plantation
- Rice field
- Swamp
- Woods
- Dis\_Bnd

0 2.25 4.5 9 KM

Thank you for your kind attention